

NTUSECURE for MacOS Clients

1

Older versions of MacOS running on TLS 1.0 are no longer supported due to security vulnerabilities. Please upgrade the MacOS to a higher version that supports TLS 1.2 and above. (**MacOS X 10.13 and above**)

Download the MacOS profile [here](#) and preload the MacBook with it.

Click on "Continue" to proceed with the profile installation.

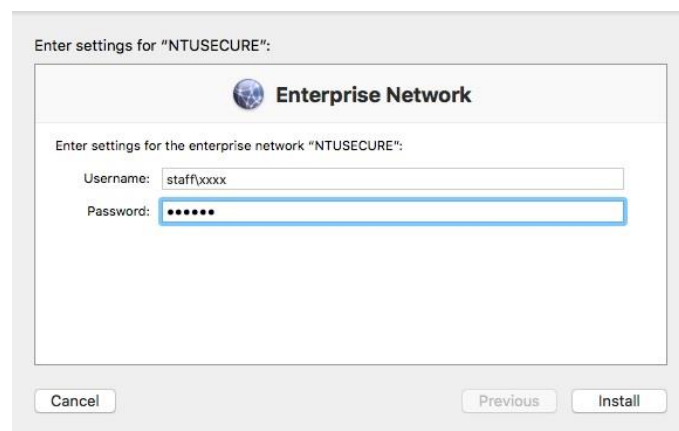


2

Click on "Continue" to proceed to the next screen.



Enter username and password in the prompt, click "Install".



3

The below screen should be seen.



When near a wireless access area, connect to NTUSECURE by clicking on the SSID "NTUSECURE" from the MacBook wireless icon.



Continue the below steps if there are changes to the username or password.



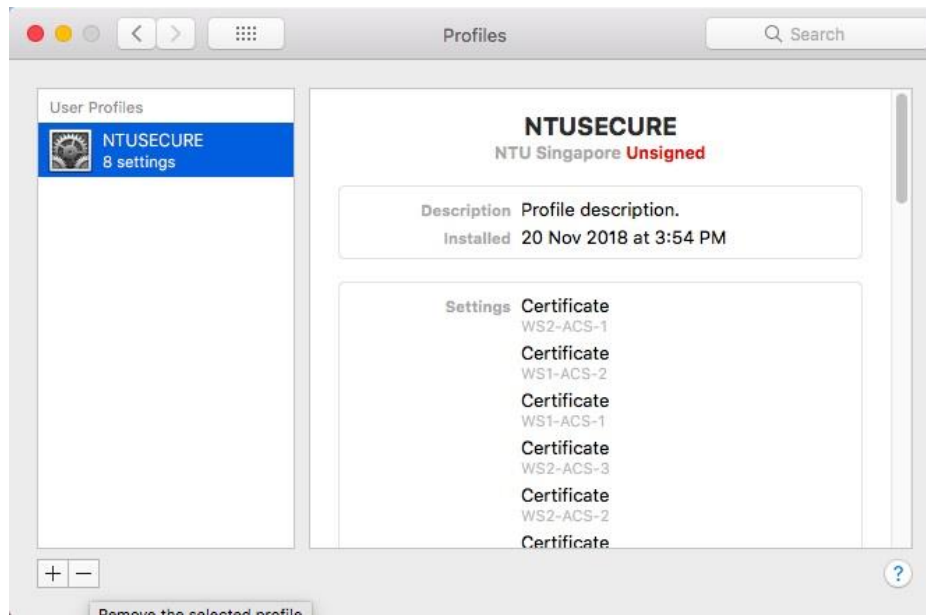
To remove the profile, navigate to "System Preferences..." from the top left hand apple icon



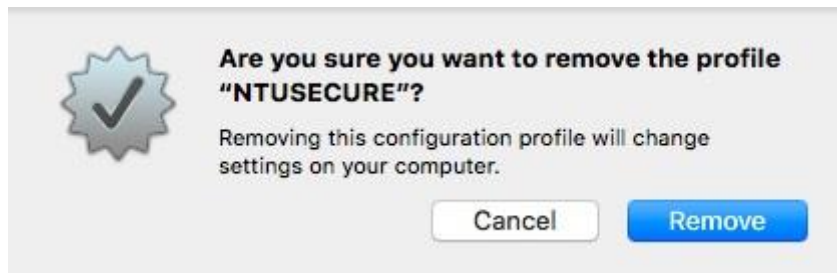
Click on "Profiles" at the bottom right of the screen



Click on the bottom left minus sign to remove the profile.



Click on "Remove" to erase the profile.



Repeat step 1 to 5 and re-enter any changes on the username and password.

--- End of Document ---