

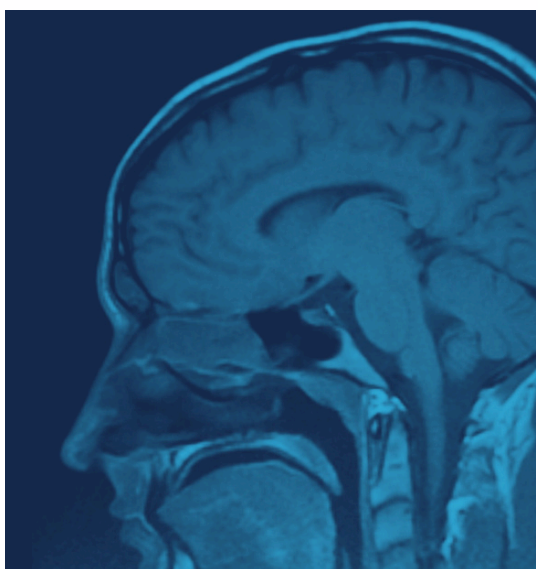


# IRB 360 NEWSLETTER

Connecting Research with Ethics

ISSUE 2024/08

## ELIGIBILITY SCREENING



All potential recruits should be screened to determine their eligibility before proceeding with the study procedures.

This process is called **Eligibility Screening** and can be classified according to when informed consent was taken.

	PRE-SCREENING	SCREENING
DEFINITION	Participants are screened <b>before</b> obtaining informed consent	Participants are screened <b>after</b> obtaining informed consent
GOOD PRACTICES	Where possible, <b>do not</b> collect identifiable data during pre-screening  If identifiable data is collected during pre-screening, the data should be <b>deleted/anonymised</b> once the participant is deemed ineligible	Participants are considered <b>recruited</b> or <b>enrolled</b> once consent is taken, even if they subsequently fail the screening process  In your IRB application, remember to factor in <b>screen failures</b> in the <b>maximum recruitment number</b>

Always **track your recruitment numbers** to keep within the approved maximum recruitment number in your IRB application.

If you need to increase the maximum recruitment number, please submit an amendment for IRB approval.

*Visit our **Guidelines** to find out more!*

### HBR

HUMAN BIOMEDICAL RESEARCH

### HTF

HUMAN TISSUE FRAMEWORK

## SEMINAR 2024



Are you conducting **Human Biomedical Research** or **Human Tissue Banking activities**?

Join our upcoming seminar organised by RIEO to refresh your understanding on the various requirements under the **Human Biomedical Research Act (HBRA)**.

Please register for either of the sessions below. **Both sessions are the same:**

<b>SESSION 1</b>	3 Oct 2024, Thu 3:30pm - 5:00pm	<b>Lee Kong Chian School of Medicine Clinical Sciences Building HQ Seminar Room Level 2 11 Mandalay Road S308232</b>	<small>Click here to register or scan the QR code:</small> 

<b>SESSION 2</b>	9 Oct 2024, Wed 10:30am - 12:00pm	<b>National Institute of Education NIE5-03-04 (PESS Journal Room) 1 Nanyang Walk S637616</b>	<small>Click here to register or scan the QR code:</small> 

### Stay tuned for our next newsletter to learn more!

To subscribe to our mailing list and for further queries, please write to [IRB@ntu.edu.sg](mailto:IRB@ntu.edu.sg)

Brought to you by:  
Research Integrity and Ethics Office (RIEO)

Refer to our website for more information on IRB Guidelines [here](#).

