

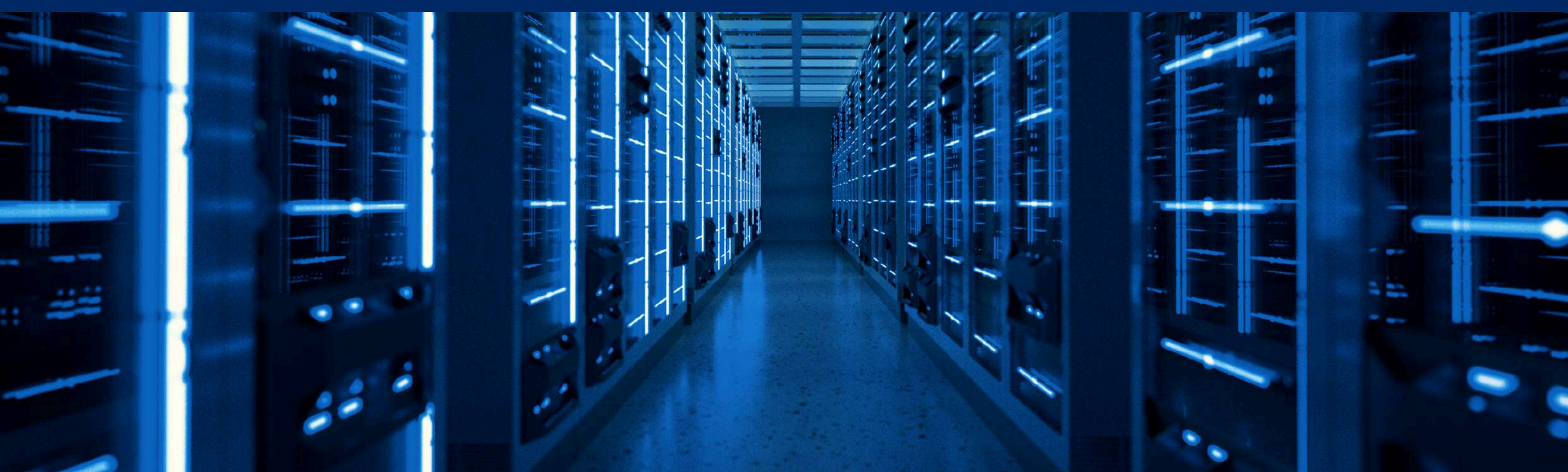


A Research Data Management
(RDM) Bulletin by NTU RDM Group

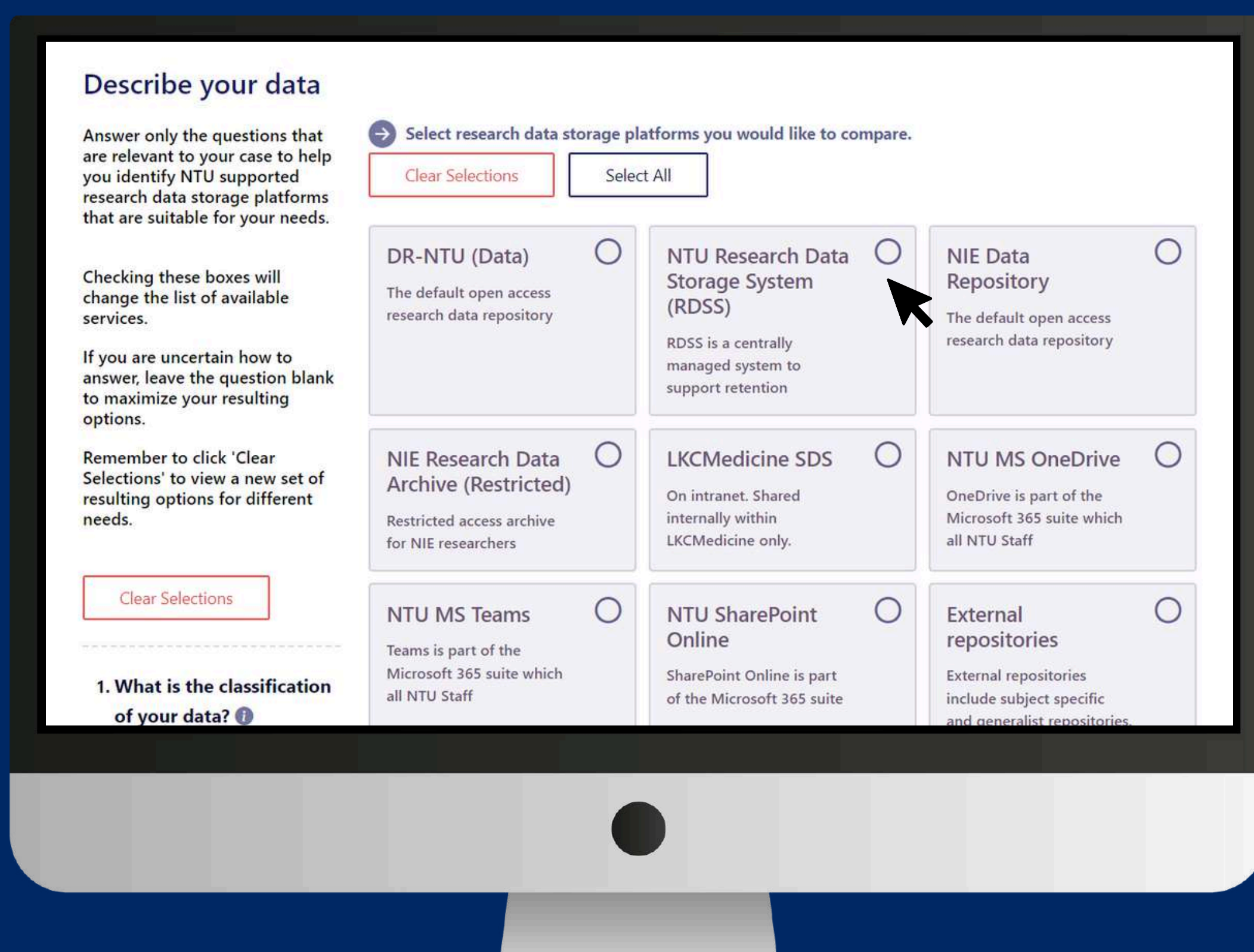
RDM GPS

Introducing the NTU Research Data Storage Finder (beta)

Not sure where to store your research data?



Use the Finder to help you identify and compare suitable
NTU-supported data storage platforms.



Describe your data

Answer only the questions that are relevant to your case to help you identify NTU supported research data storage platforms that are suitable for your needs.

Checking these boxes will change the list of available services.

If you are uncertain how to answer, leave the question blank to maximize your resulting options.

Remember to click 'Clear Selections' to view a new set of resulting options for different needs.

→ Select research data storage platforms you would like to compare.

Clear Selections Select All

DR-NTU (Data) The default open access research data repository	NTU Research Data Storage System (RDSS) RDSS is a centrally managed system to support retention	NIE Data Repository The default open access research data repository
NIE Research Data Archive (Restricted) Restricted access archive for NIE researchers	LKCmedicine SDS On intranet. Shared internally within LKCmedicine only.	NTU MS OneDrive OneDrive is part of the Microsoft 365 suite which all NTU Staff
NTU MS Teams Teams is part of the Microsoft 365 suite which all NTU Staff	NTU SharePoint Online SharePoint Online is part of the Microsoft 365 suite	External repositories External repositories include subject specific and generalist repositories

1. What is the classification of your data? ⓘ

Experience the new
RDSF tool now.

[CLICK HERE](#)



Please give us your feedback and suggestions [here](#) so we can make the Finder more useful for you.