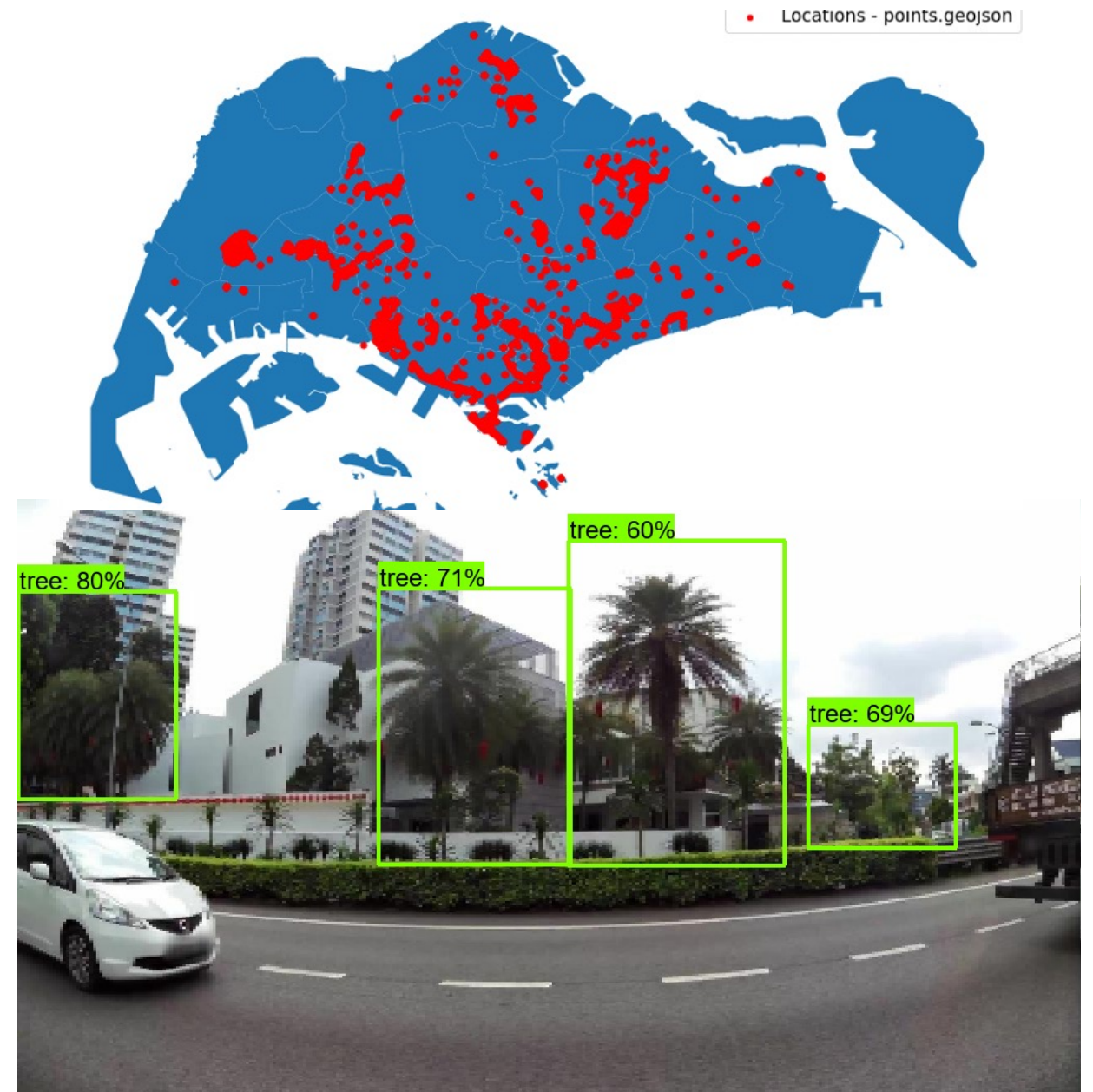
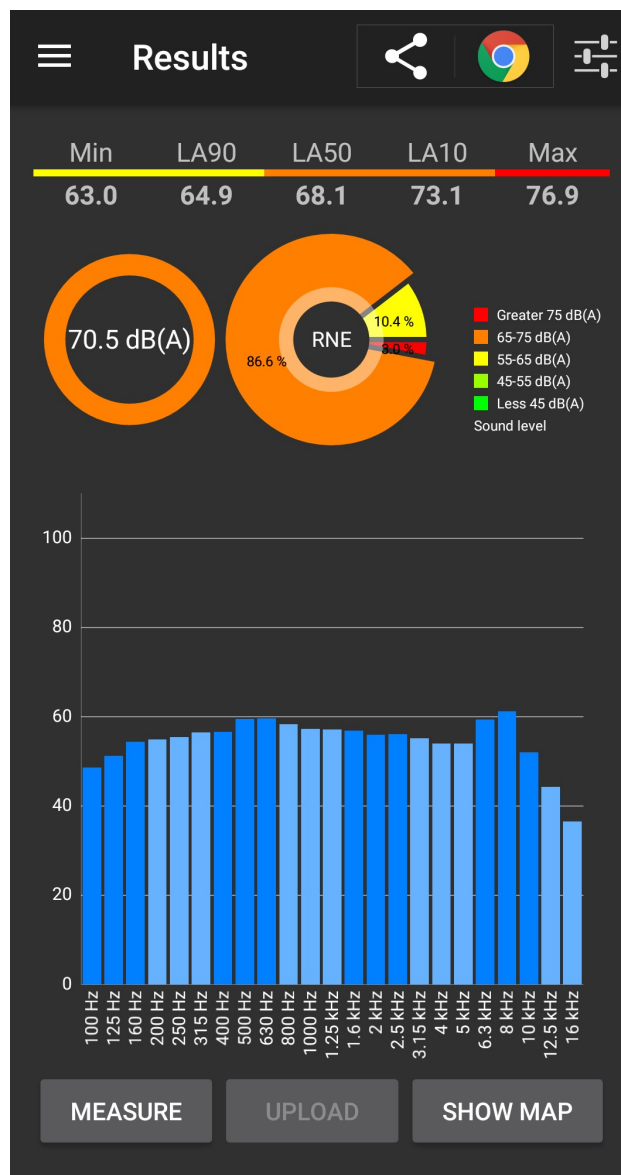


Community noise measure via crowd sourcing

Student: Lim Yun Jie

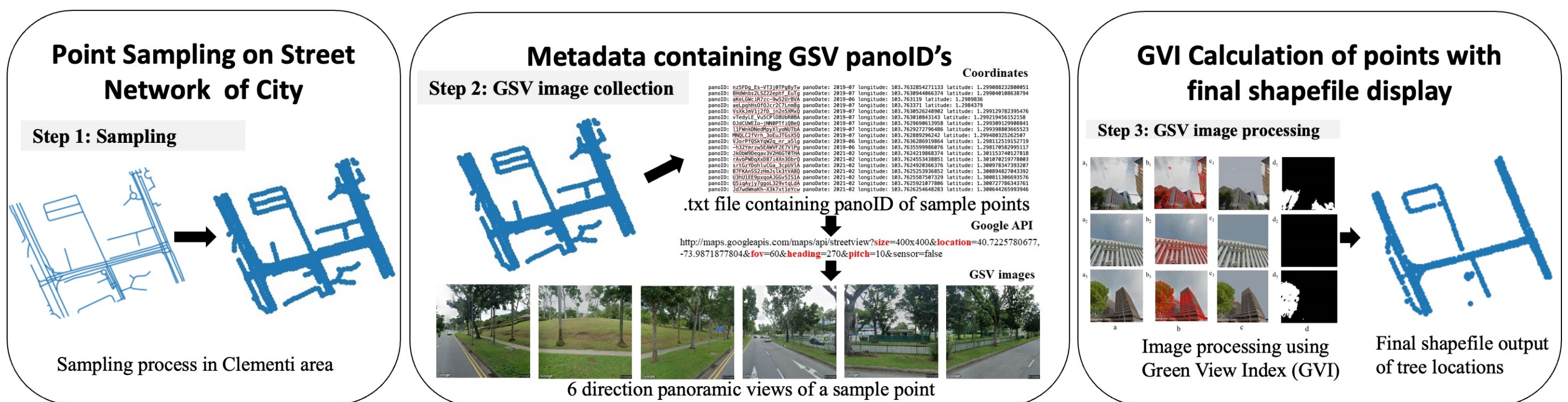
Supervisor: Lee Bu Sung, Francis



Left: Screenshot of Noise Capture application **Top-right:** Analysis of distribution of noise data **Bottom-right:** Tree detection algorithm created

Project Objectives:

The project aims to look at the impact of noise using a step-by-step incremental approach that covers the collection of noise and other applicable forms of data, the analysis of noise data, and exploration of the impact of trees in mitigating noise. A systematic approach was used for the collection and storage of the data so that similar studies can be carried out in other cities, e.g. Wellington. New Zealand which is our partner city.



Pipeline of a method used to obtain tree location data