

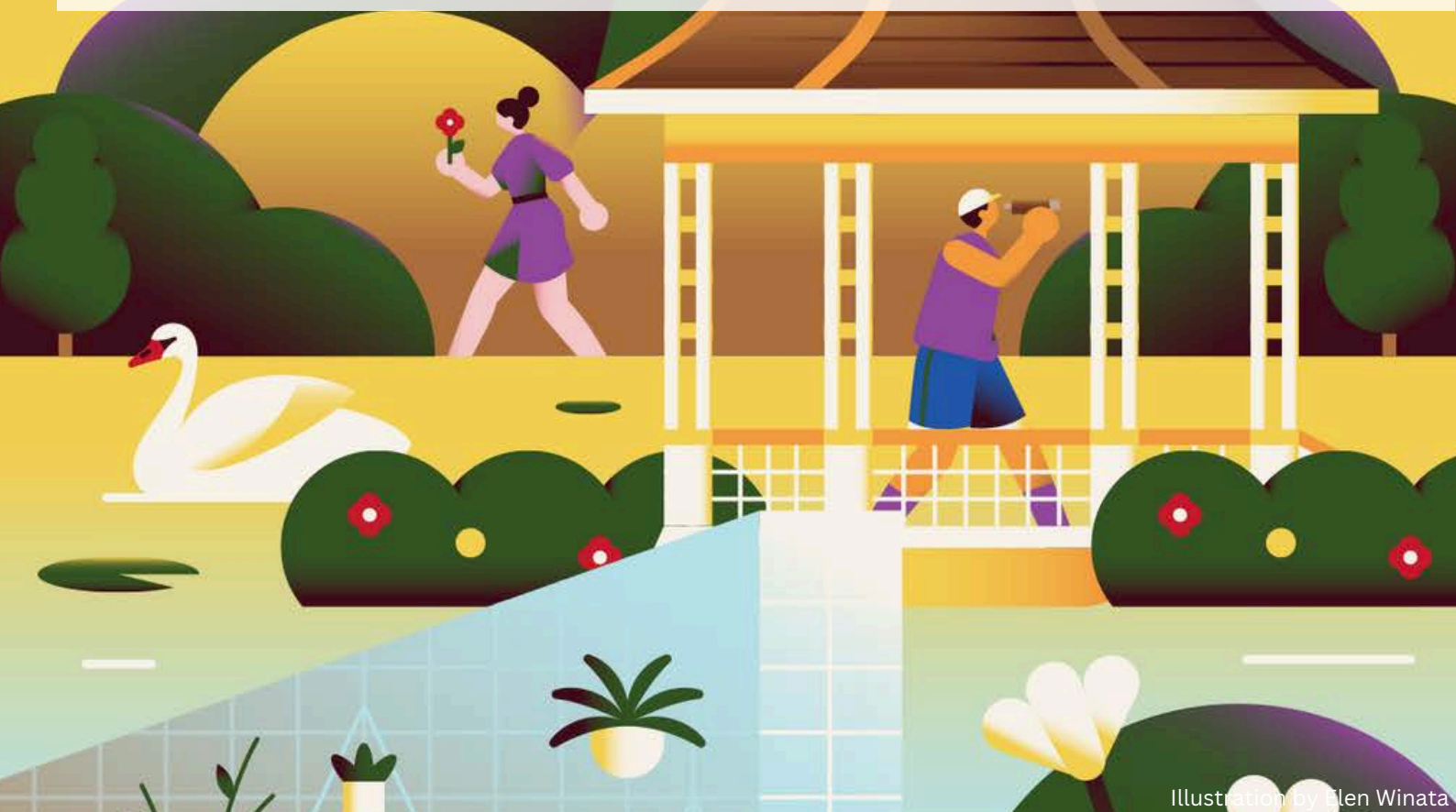


# HL1005 Introduction to Singapore Literature

CHERYL JULIA LEE

**This course aims to acquaint you with a range of modern Singapore literature including poetry, prose, drama, and film. As we will be studying these texts in relation to their socio-historical contexts, you will learn about the history and the culture of Singapore.**

**Recurring themes include the formation of Singapore as a nation state, the development of a national identity, tensions in the usage of “standard” and colloquial English, multiculturalism, and the negotiation of social constraints within different communities. In addition, you will be equipped with the necessary vocabulary to respond to a range of artistic medium and be given opportunities to develop research and writing skills.**



# schedule

**Week 1: Introduction**

**Week 2: Language and Voice**

- Assigned Reading: [Wang Gungwu, “Three Faces of Night”](#) and [Joshua Ip, extracts from \*sonnets from the singlish\*](#)

**Week 3: Object Exercise**

**Week 4: Colonial Legacies**

- Assigned Reading: [Edwin Thumboo, “Ulysses by the Merlion”](#) and [Mok Zining, extracts from \*The Orchid Folios\*](#)

**Week 5: Transitions—Tradition and Modernity**

- Assigned Reading: [Kuo Pao Kun, “Mama Looking for her Cat”](#)

**Week 6: Nostalgia**

- Assigned Reading: [Arthur Yap, “there’s no future in nostalgia”](#) and [Boey Kim Cheng, “Clear Brightness”](#)

**Week 7: Nostalgia and Place**

- Assigned Reading: [Mohammed Latiff Mohammed, “Vanished”](#) and [Alfian Sa’at, “Corridor”](#)

**Weeks 8-9: Writing from the Margins I**

- Assigned Reading: [Balli Kaur Jaswal, \*Inheritance\*](#)

**Week 10: Writing from the Margins II**

- Assigned Reading: [Yeo Siew Hua, \*A Land Imagined\*](#)

**Week 11: No Class (Hari Raya Puasa)**

**Week 12: Singapore—City of the Future**

- Assigned Reading: [Victor Fernando R. Ocampo, “i m d 1 in 10”](#) and [ila, “Mother Techno”](#)

**Week 13: Conclusion**

\* Please purchase Balli Kaur Jaswal’s *Inheritance*. Limited copies of Yeo Siew Hua’s *A Land Imagined* are available at the library. All other texts will be provided on NTU Learn.

# assessment

**20% - Participation**

**30% - Coursework Essay**

**50% - Final Exam (Closed book)**

\* Please note that the use of generative artificial intelligence is not permitted for this module.