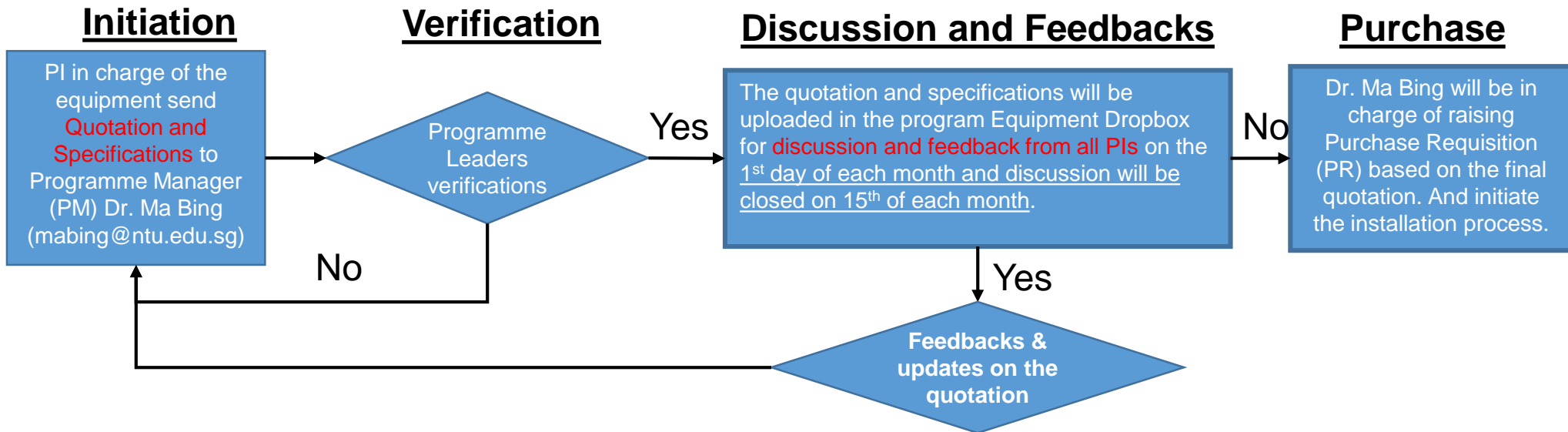


New Equipment Purchase



Note:

1. Equipment or instrument < SGD 3000 (such as hotplate, dry box etc.) do not need to follow this Workflow, it shall be raised and handled by respective PI 's group using their project account.
2. Control Equipment are those equipment or instrument that require license such as N2 for laser, ultrasonic, etc., need to put safety personnel as a verifier.
3. Equipment purchased by respective PI's group shall follow the equipment installation work flow guidelines, inform Dr. Ma, Safety officer one month in advance for location and facility planning.